



Cdc42EP5 Polyclonal Antibody

Catalog No	YP-Ab-03754
Isotype	IgG
Reactivity	Human;Mouse
Applications	WB;IHC;IF;ELISA
Gene Name	CDC42EP5
Protein Name	Cdc42 effector protein 5
Immunogen	The antiserum was produced against synthesized peptide derived from human BORG3. AA range:1-50
Specificity	Cdc42EP5 Polyclonal Antibody detects endogenous levels of Cdc42EP5 protein.
Formulation	Liquid in PBS containing 50% glycerol, 0.5% BSA and 0.02% sodium azide.
Source	Polyclonal, Rabbit,IgG
Purification	The antibody was affinity-purified from rabbit antiserum by affinity-chromatography using epitope-specific immunogen.
Dilution	WB: 1/500 - 1/2000. IHC: 1/100 - 1/300. ELISA: 1/40000.. IF 1:50-200
Concentration	1 mg/ml
Purity	≥90%
Storage Stability	-20°C/1 year
Synonyms	CDC42EP5; BORG3; CEP5; Cdc42 effector protein 5; Binder of Rho GTPases 3
Observed Band	22kD
Cell Pathway	Endomembrane system ; Peripheral membrane protein . Cytoplasm, cytoskeleton
Tissue Specificity	Bone,Pancreas,
Function	domain:The CRIB domain mediates interaction with CDC42.,function:Probably involved in the organization of the actin cytoskeleton. May act downstream of CDC42 to induce actin filament assembly leading to cell shape changes. Induces pseudopodia formation in fibroblasts. Inhibits MAPK8 independently of CDC42 binding. Controls septin organization and this effect is negatively regulated by CDC42.,similarity:Belongs to the BORG/CEP family.,similarity:Contains 1 CRIB domain.,subunit:Interacts with CDC42, in a GTP-dependent manner, and with SEPT7.,
Background	Cell division control protein 42 (CDC42), a small Rho GTPase, regulates the formation of F-actin-containing structures through its interaction with the downstream effector proteins. The protein encoded by this gene is a member of the Borg (binder of Rho GTPases) family of CDC42 effector proteins. Borg family proteins contain a CRIB (Cdc42/Rac interactive-binding) domain. They bind to CDC42 and regulate its function negatively. The encoded protein may inhibit



c-Jun N-terminal kinase (JNK) independently of CDC42 binding. The protein may also play a role in septin organization and inducing pseudopodia formation in fibroblasts [provided by RefSeq, Jul 2013],

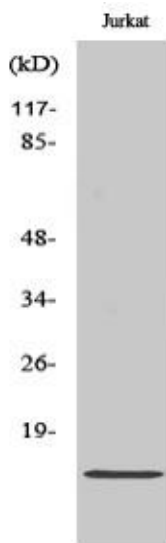
matters needing attention

Avoid repeated freezing and thawing!

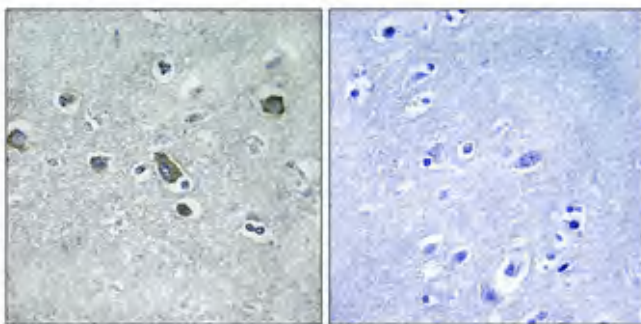
Usage suggestions

This product can be used in immunological reaction related experiments. For more information, please consult technical personnel.

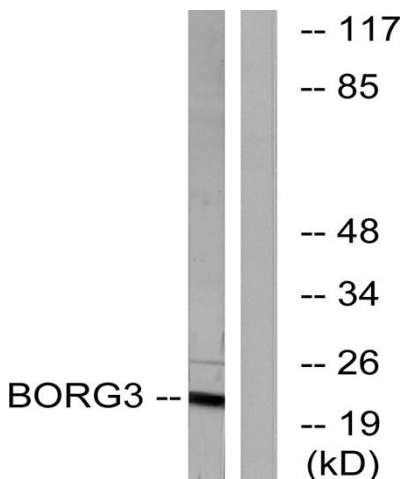
Products Images



Western Blot analysis of various cells using Cdc42EP5 Polyclonal Antibody diluted at 1:500



Immunohistochemical analysis of paraffin-embedded Human brain. Antibody was diluted at 1:100(4° overnight). High-pressure and temperature Tris-EDTA,pH8.0 was used for antigen retrieval. Negative contrl (right) obtained from antibody was pre-absorbed by immunogen peptide.



Western blot analysis of lysates from Jurkat cells, using BORG3 Antibody. The lane on the right is blocked with the synthesized peptide.